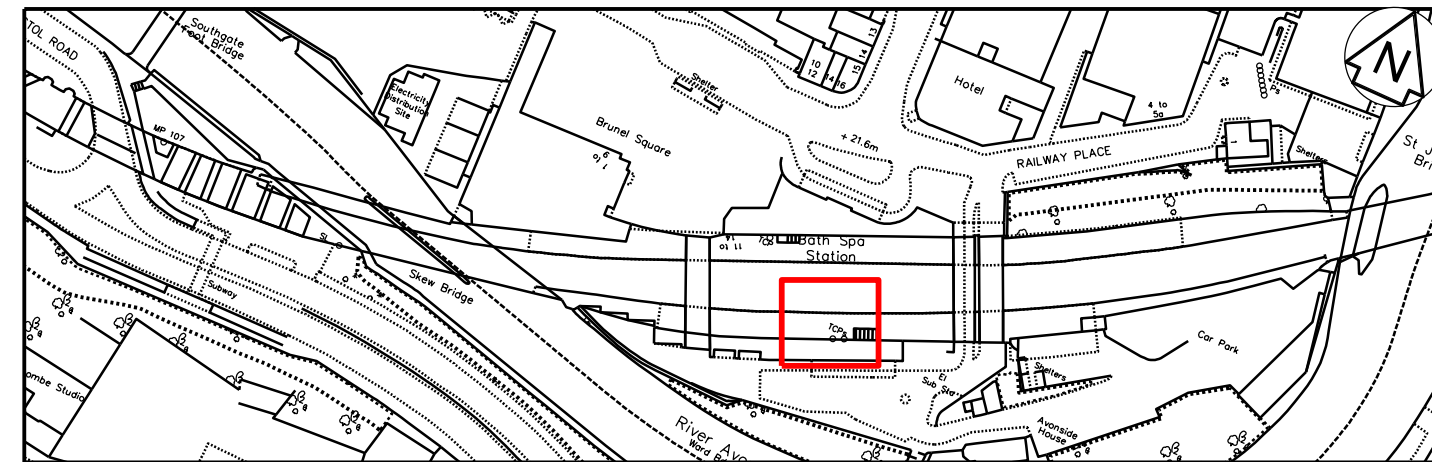
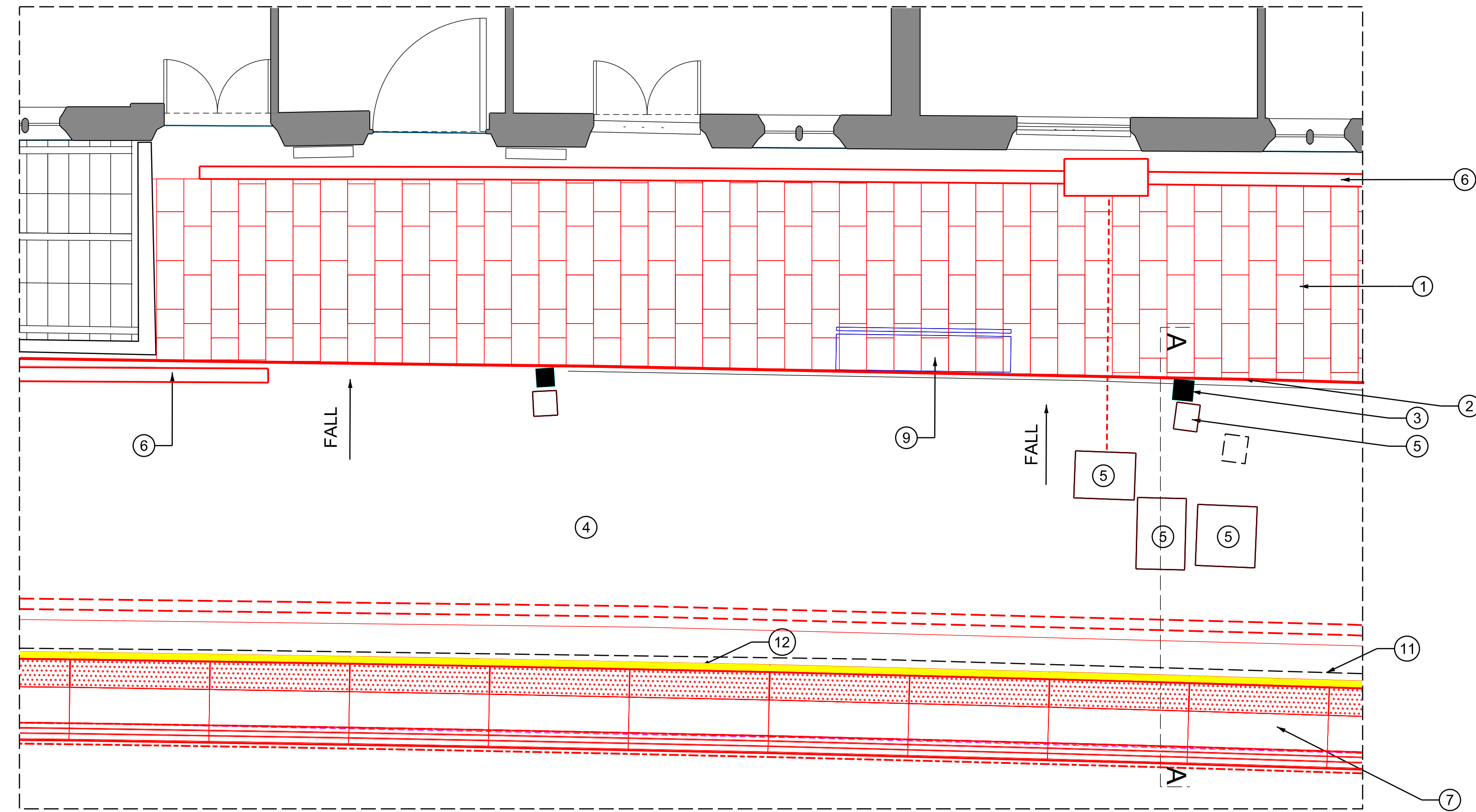


COLOUR LEGEND:

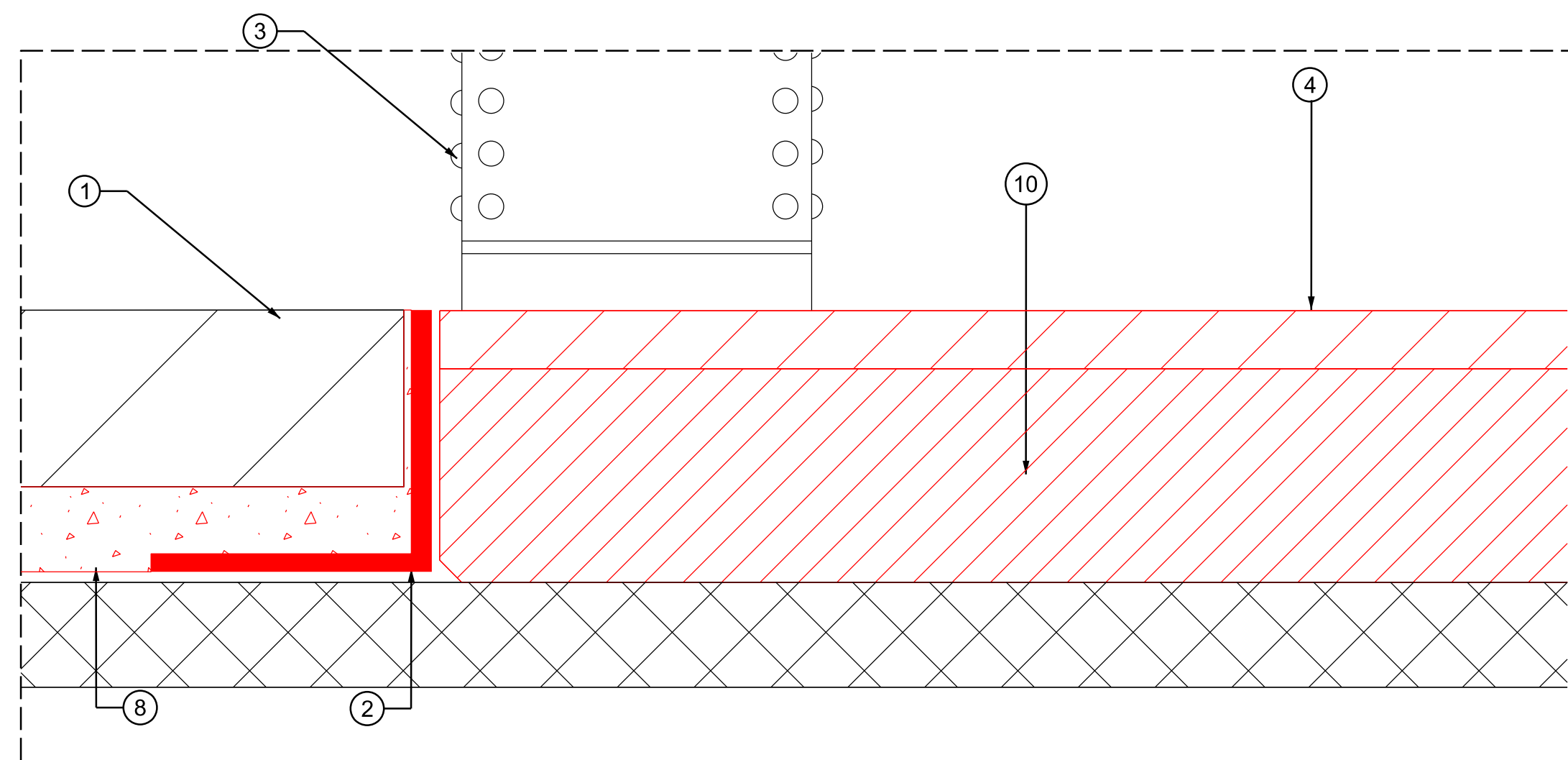
	EXISTING TO BE RETAINED
	EXISTING TO BE MODIFIED
	PROPOSED



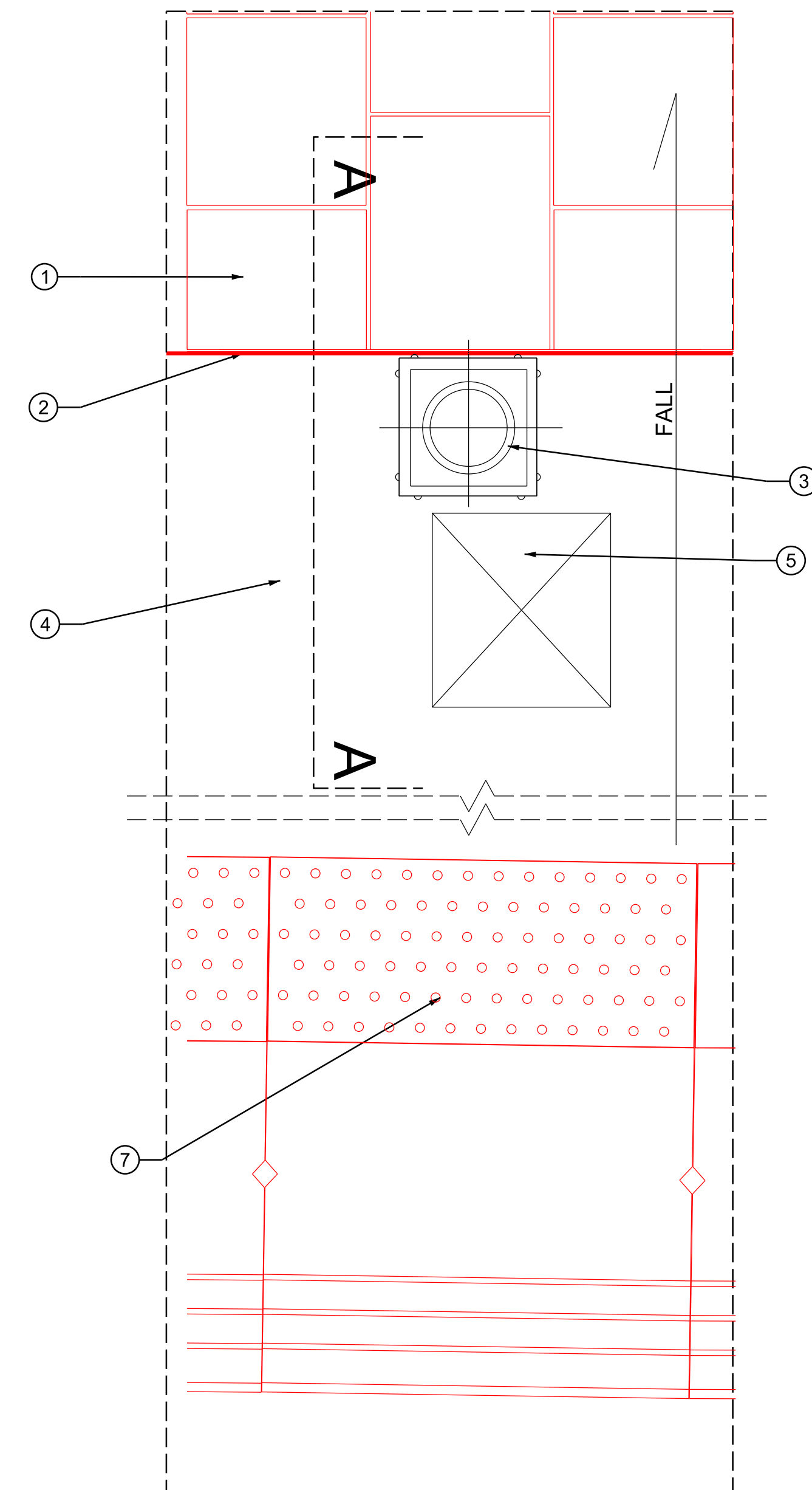
KEY PLAN  
SCALE 1:2000



1 LAYOUT PLAN AT PLATFORM 1  
1:50

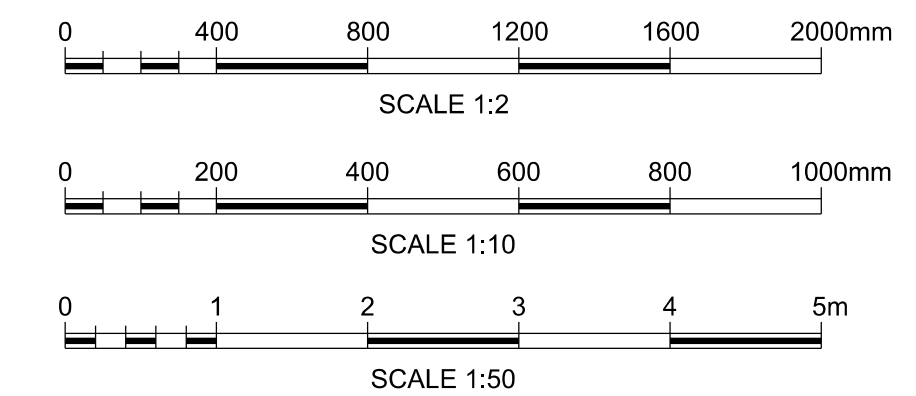


3 SECTION A-A @ PLATFORM 1  
1:2



2 LAYOUT PLAN TO PLATFORM 1  
1:10

- Legend/Notes
- ALL DIMENSIONS ARE IN MILLIMETRES UNLESS NOTED OTHERWISE.
  - ALL LEVELS ARE INDICATIVELY IN METRES ABOVE ORDNANCE DATUM.
- VICTORIA STONE PAVING SLABS (RELAID)
  - RETAINER - STAINLESS STEEL ANGLE PROFILE
  - EXISTING COLUMN TO CANOPY, WITH INTERNAL RAIN WATER PIPE
  - NEW MACADAM PLATFORM SURFACE
  - EXISTING MANHOLES
  - NEW LINEAR DRAINAGE (WITH DRAIN PIT CHAMBERS)
  - NEW TACTILE TILES TO PLATFORM EXTENSION
  - SUBSTRATE TO VICTORIA STONE PAVING SLABS
  - RELOCATED EXISTING BENCHES.
  - NEW SUB-BASE TO MACADAM FINISH
  - EXISTING CANOPY ABOVE
  - NEW YELLOW WARNING LINE BEHIND BLISTER TACTILE



A01	28/9/16	ISSUED FOR REVIEW	CD	AP	HS
Rev	Date	Description of Revisions	Drawn	Chkd	Appr
Status					Suitability
					S3

FIT FOR IDR REVIEW



Project  
GREAT WESTERN  
ROUTE MODERNISATION  
BATH CORRIDOR STATIONS

Drawing Title  
BATH SPA STATION  
PROPOSED DETAIL  
JOINT BETWEEN VICTORIA  
STONE AND ASPHALT FINISH

Designed	H LINDSAY	Signed		Date	28/9/16
Drawn	C DUVALMA	Signed		Date	28/9/16
Checked	A POSTINGS	Signed		Date	28/9/16
Approved	H SIMPSON	Signed		Date	28/9/16
Scale(s)	As Shown	ELR & Mileage	MLN1 106m 71ch		

Alternative Reference  
C115026  
Drawing Number  
Revision  
1 of 1