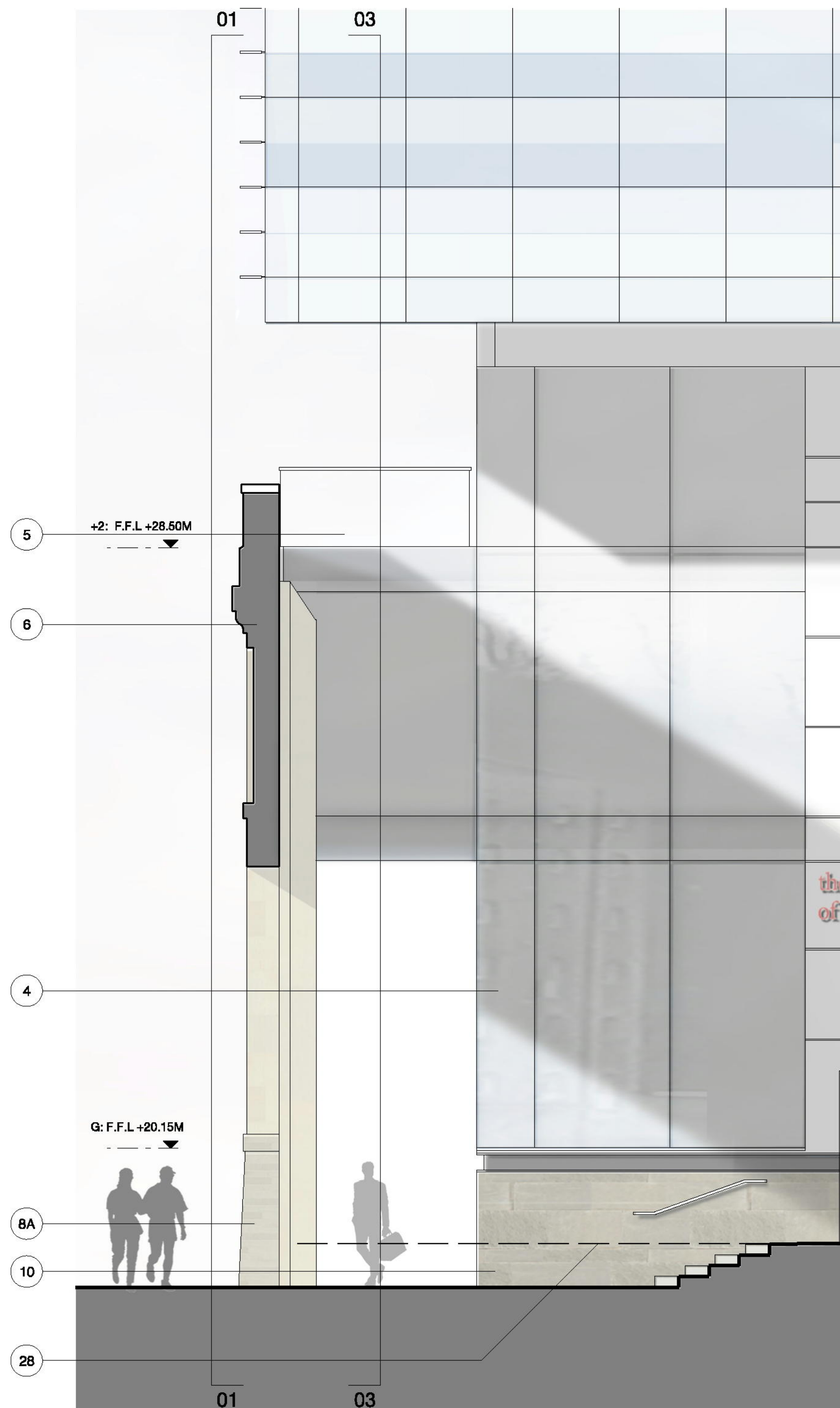
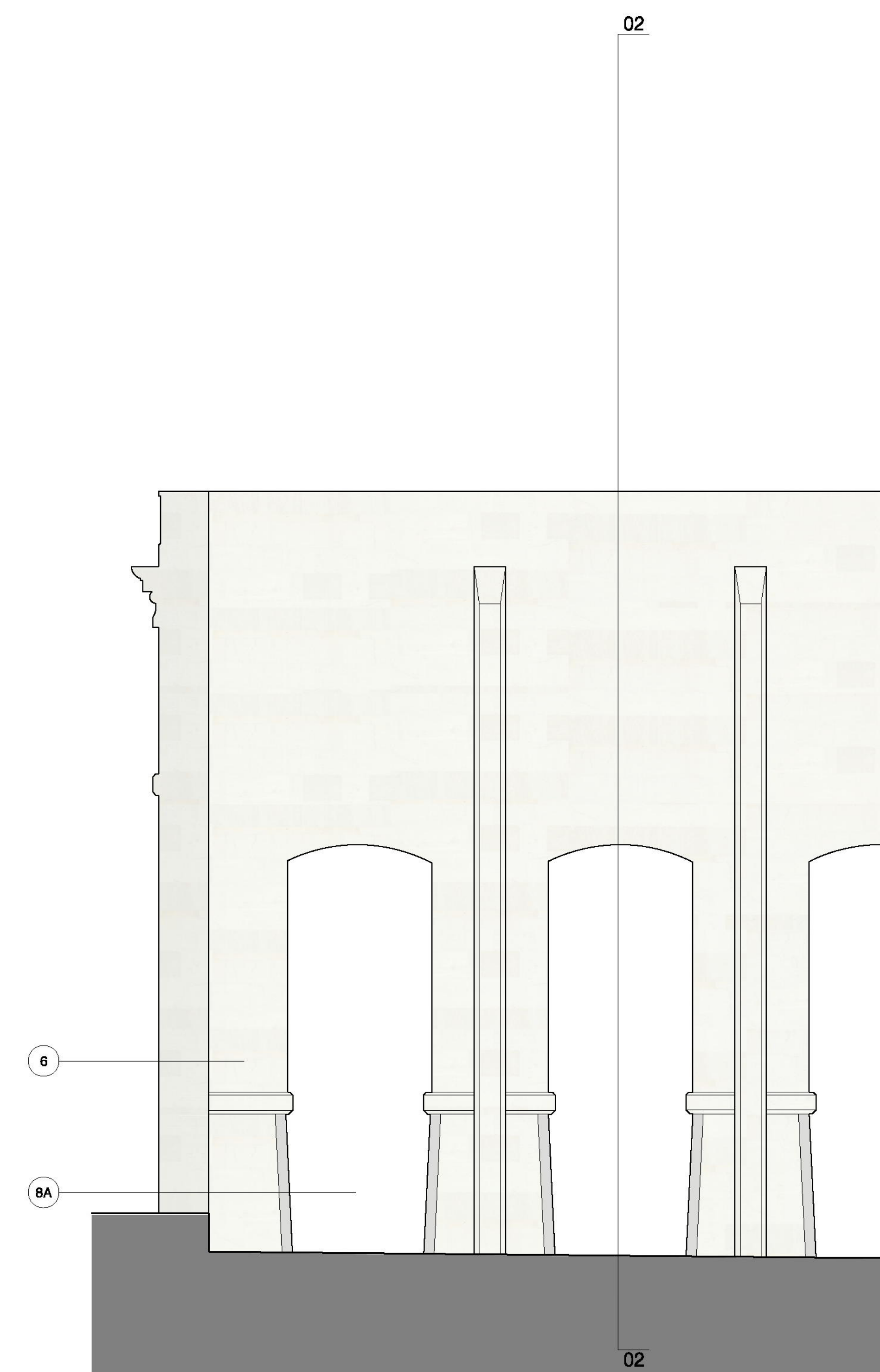


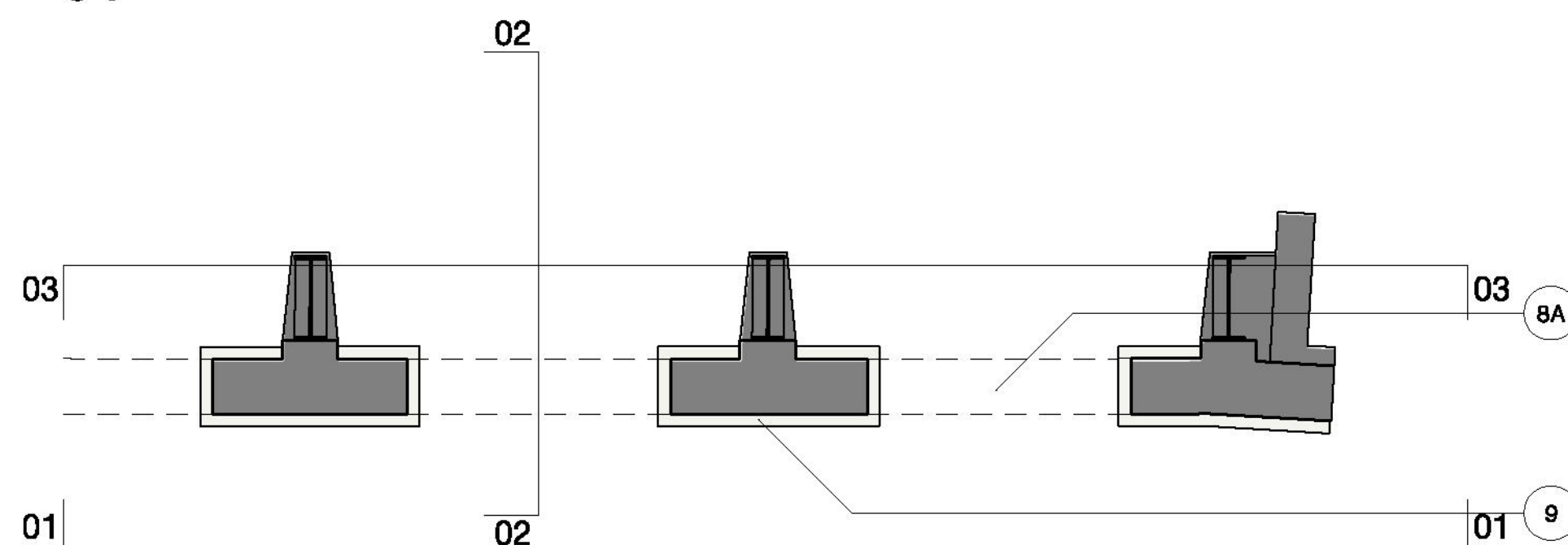
01 SOUTH FACADE DETAIL ELEVATION



02 SOUTH FACADE DETAIL SECTION



03 SOUTH FACADE DETAIL INTERNAL ELEVATION



04 SOUTH FACADE DETAIL PLAN

- | | | | | |
|---|--|---|---|---|
| <ol style="list-style-type: none"> 1. FLAT METAL CLADDING UPSTAND TO ATRIUM ROOF 2. GLASS FIN TO FORM ROOF EDGE 3. PRECAST CONCRETE CANOPY 4. FULL HEIGHT DOUBLE GLAZING CAPPED TRANSOMS. CAPLESS MULLIONS. 5. CANTILEVERED GLASS BALUSTRADE WITH STAINLESS STEEL HANDRAIL 6. EXISTING FAÇADE RETAINED AND REPAIRED 7. EXISTING WINDOWS TO BE REPAIRED /REPLACED WHERE NECESSARY | <ol style="list-style-type: none"> 8A. EXISTING WINDOW OPENINGS EXTENDED TO GROUND TO FORM PAVEMENT LEVEL ARCADE. WINDOWS REMOVED. STONE RETURN AND CILL TO MATCH EXISTING ROADSIDE ELEVATION 8B. EXISTING OPENING REOPENED. STONEMWORK MADE GOOD 8C. EXISTING WINDOW OPENINGS EXTENDED TO NEW GROUND FLOOR LEVEL. WINDOWS REMOVED. STONE WORK TO BE MADE GOOD TO MATCH EXISTING 9. EXISTING RUSTICATED STONE PLINTH 10. STONE FACE TO PLINTH OF NEW BUILDING 11. OPAQUE INSULATED GLASS PANEL. CAPLESS, STRUCTURALLY BONDED | <ol style="list-style-type: none"> 12. SILVER GREY FRITTED OPAQUE INSULATED GLASS PANEL. CAPLESS, STRUCTURALLY BONDED 13. SILVER GREY FRITTED CLEAR DOUBLE GLAZED PANEL. CAPLESS, STRUCTURALLY BONDED 14. CLEAR DOUBLE GLAZED PANEL. CAPLESS, STRUCTURALLY BONDED 15. OPAQUE INSULATED GLAZED OPENING VENT 16. CLEAR DOUBLE GLAZED OPENING VENT 17. RENDER FINISH IN SUBTLE BANDS OF VARYING TONE | <ol style="list-style-type: none"> 18. STAINLESS STEEL ANGLE TO FORM RULED LINE BETWEEN DIFFERENT TONES OF RENDER 19. PUNCHED METAL FRAMED DOUBLE GLAZED WINDOWS 20. INDUSTRIAL SHUTTER DOOR TO DELIVERY BAY 21. SINGLE PLY ROOF MEMBRANE 22. EXPOSED CONCRETE SLAB WITH SUSPENDED LIGHTING BOOM CONTAINING ALL REQUIRED MEP SERVICES (SMOKE DETECTION AND SPRINKLERS) 23. CONCRETE SLAB WITH CAST IN CONCRETE COOL SYSTEM OR SIMILAR | <ol style="list-style-type: none"> 24. SACRIFICIAL RAISED FLOOR SYSTEM 25. ALUMINIUM PLANK ROOF DECKING 26. EXTERNAL WORKS REFER TO LANDSCAPE DRAWINGS 27. METAL CLADDING TO SOFFIT 28. LEVEL OF EXISTING INTERNAL GROUND FLOOR TO BE AMENDED. 29. METAL BALUSTRADE WITH HORIZONTAL MID RAILS |
|---|--|---|---|---|

Rev	Date	Description	By	Chkd	App
-	28.03.07	PLANNING APPLICATION	MF	PC	SR

Do not Scale. Use figured dimensions only. All dimensions to be checked on site
 All drawings to be read in conjunction with the Engineers' drawings. Any discrepancies between consultants drawings to be reported to the Architect before any work commences.
 The Contractor's attention is drawn to the Health & Safety matters identified in the Health & Safety plan as being potentially hazardous. These items should not be considered as a complete and final list. The Work Package Contractor's normal Health and Safety obligations still apply when undertaking constructional operations both on and off site.

PLANNING

24 Britton Street London EC1M 5UA	+44 (0) 20 7608 7500 T +44 (0) 20 7608 7501 F info@wilkinsonseye.com	Project DYSON SCHOOL OF DESIGN INNOVATION	Drawn/Chkd/ App MF/PC/SR
WilkinsonEyre.Architects		Title TYPICAL SOUTH WING FAÇADE STUDY NEWARK WORKS SMITHS SHOP FRONT	
Date 28.03.07	Scale @A1 1:50	Project no. 394	Drawing no. B-607
		Rev. -	

Copyright WilkinsonEyre Architects Ltd