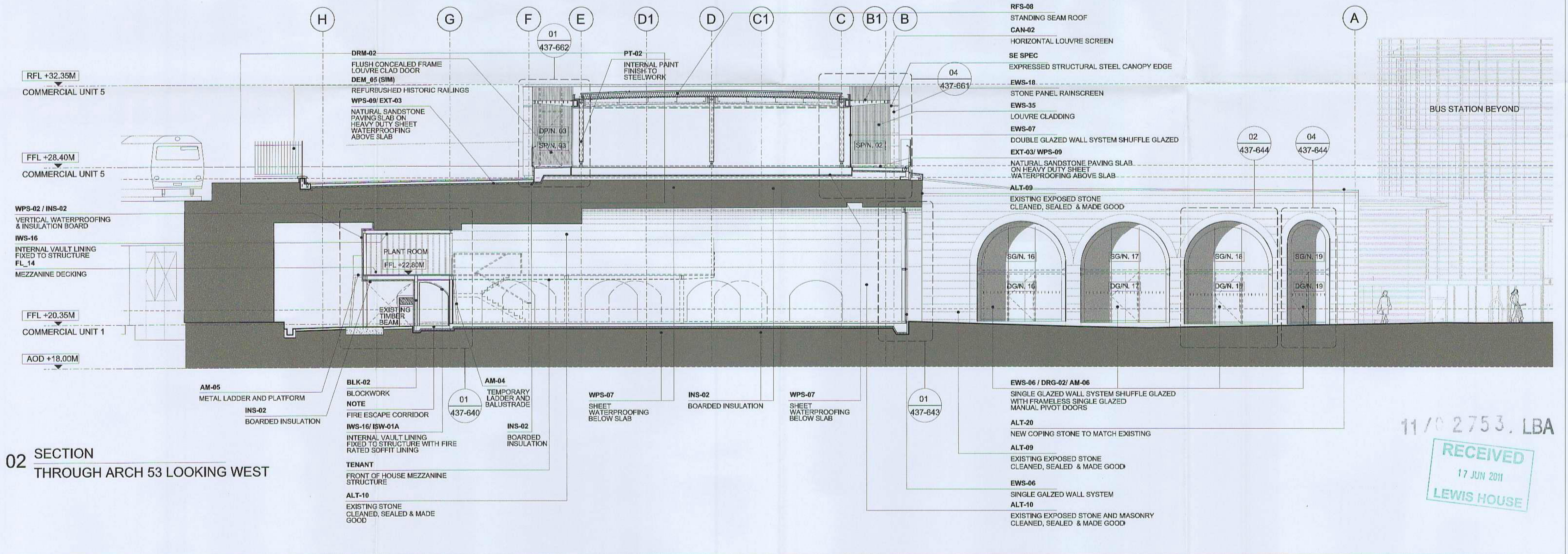


01 SECTION
THROUGH FINGER VAULT LOOKING WEST

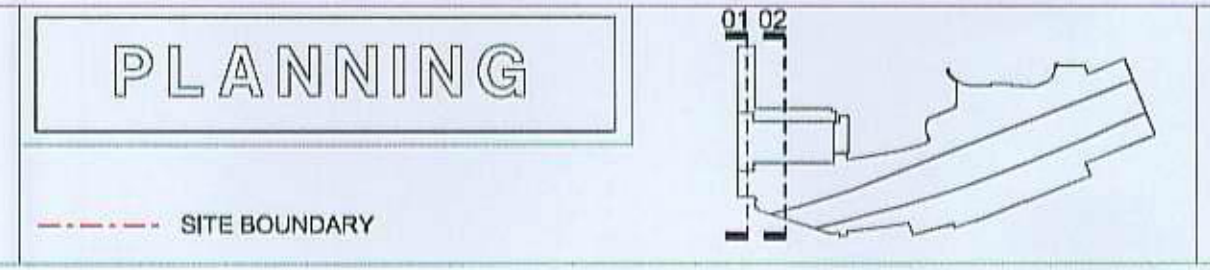


02 SECTION
THROUGH ARCH 53 LOOKING WEST

11/02753.LBA
RECEIVED
17 JUN 2011
LEWIS HOUSE

Rev	Date	Description	By	Chkd	App
J	10.06.2011	ISSUES FOR PLANNING - SERVICE LIFT APPLICATION	PF	CMD	CD
002	29.11.2010	P4. ROOFING & WATERPROOFING CONSTRUCTION ISSUE	PF	NK	SR
001	08.11.2010	P3. EXTERNAL WALL CONSTRUCTION ISSUE	PF	NK	SR
M	21.05.2010	REVISED TENDER ISSUE	JG	NK	SR
L	07.05.2010	APPROVAL ISSUE	JG	NK	SR
K	19.02.2010	UPDATED TO SUIT UNIT 5 REVISED LEVELS (TO RETAIN ARCHAEOLOGY IN-SITU)	JD	SR	SR
J	02.10.2009	FORM 9 ISSUE	JD	SR	SR
I	19.09.2008	TENDER: INTERNAL PACKAGE 3	JD	SR	SR
H	01.09.2008	TENDER: INSULATION / WATERPROOFING PACKAGE	CR	KN	SR
G	29.08.2008	TENDER: EXTERNAL ENVELOPE PACKAGE 2	CR	KN	SR

All drawings to be read in conjunction with the Engineers' drawings. Any discrepancies between consultants drawings to be reported to the Architect before any work commences.
The Contractor's attention is drawn to the Health & Safety matters identified in the Health & Safety plan as being potentially hazardous. These items should not be considered as a complete and final list. The Work Package Contractor's normal Health and Safety obligations still apply when undertaking constructional operations both on and off site.
Drawings are based on MJ Rees measured survey information.



33 Bowling Green Lane London EC1R 0BJ
+44 (0) 20 7668 7800 T
+44 (0) 20 7668 7801 F
info@wilkinsonseyre.com

Project BATH SOUTHGATE RAILWAY STATION
Title PROPOSED SECTIONS TRAIN STATION, VAULTS & NEW BUILD
Date 30.10.2007 Scale @A1 1:100 Project no. 437 Drawing no. 401 Rev. N

WilkinsonEyre.Architects