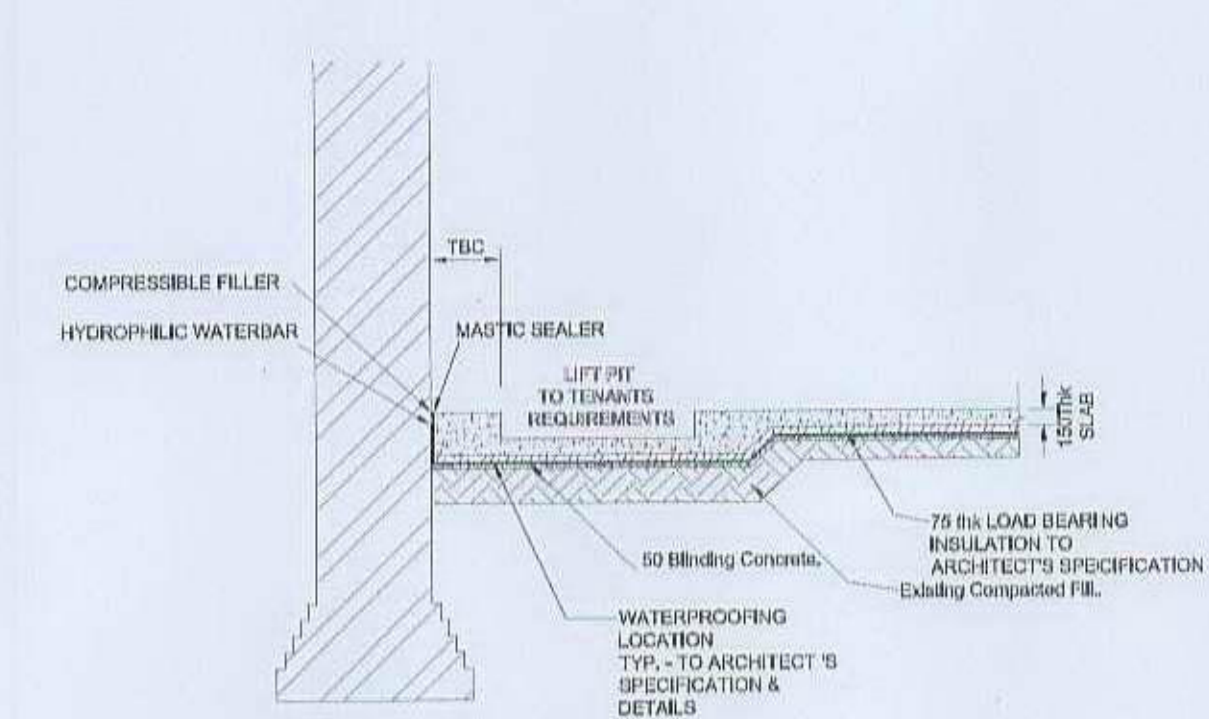
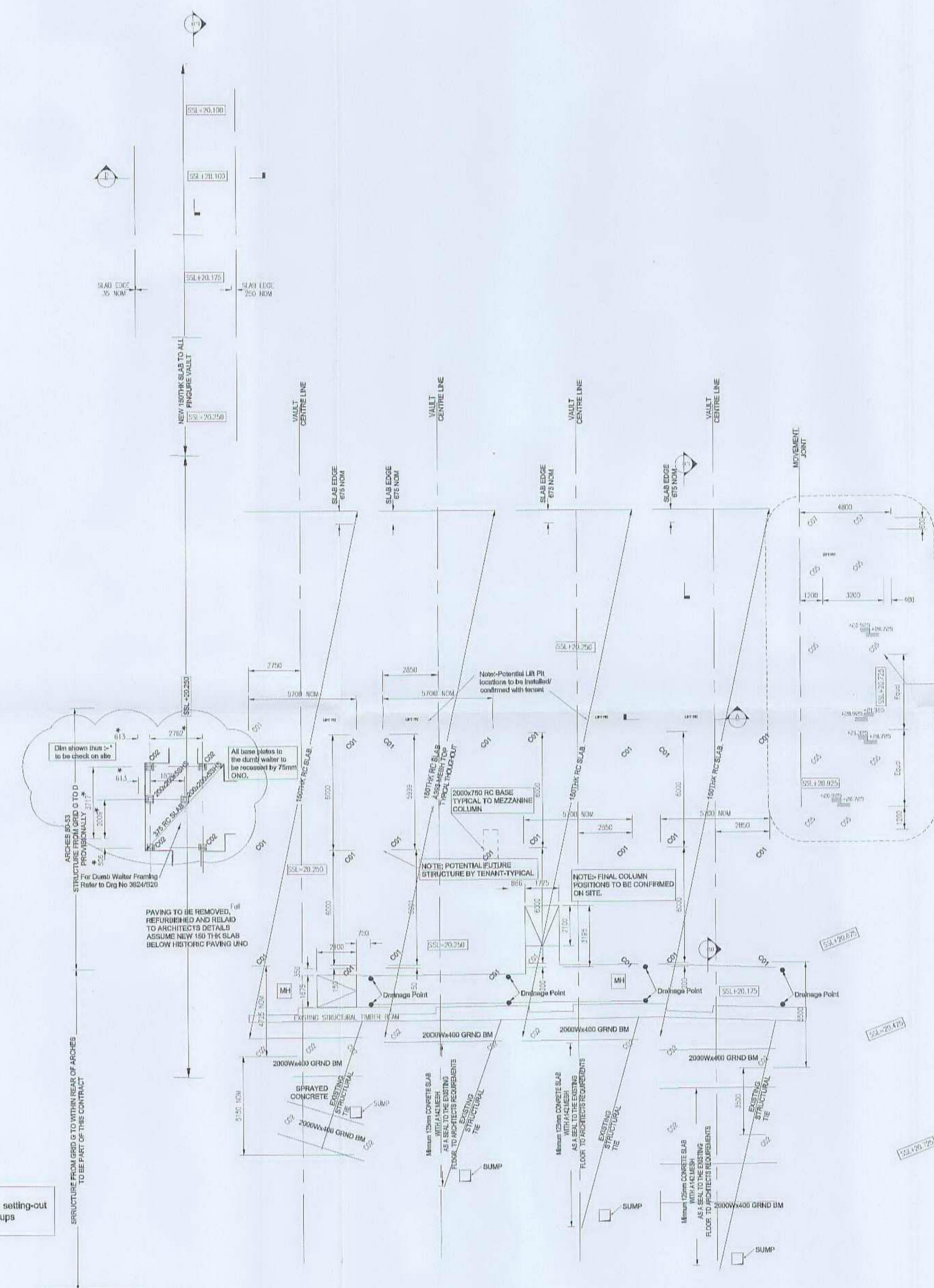


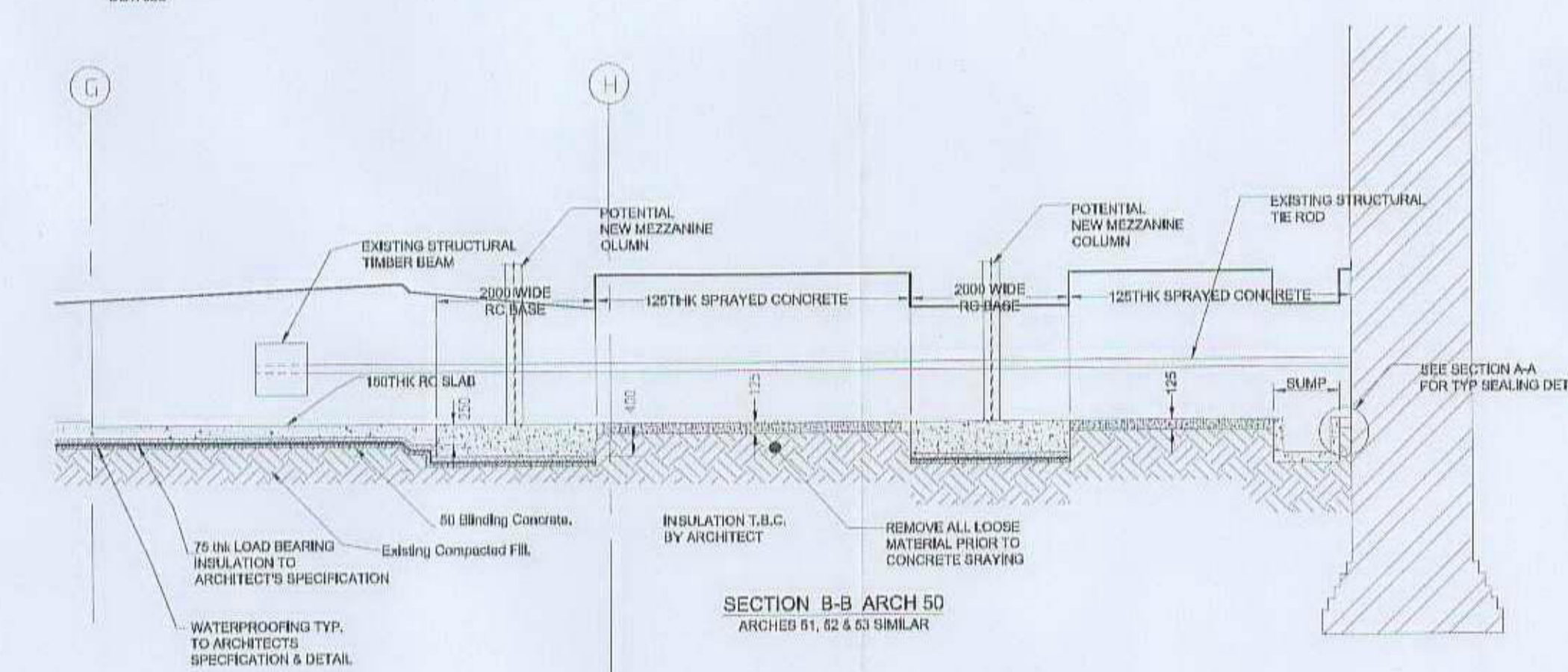
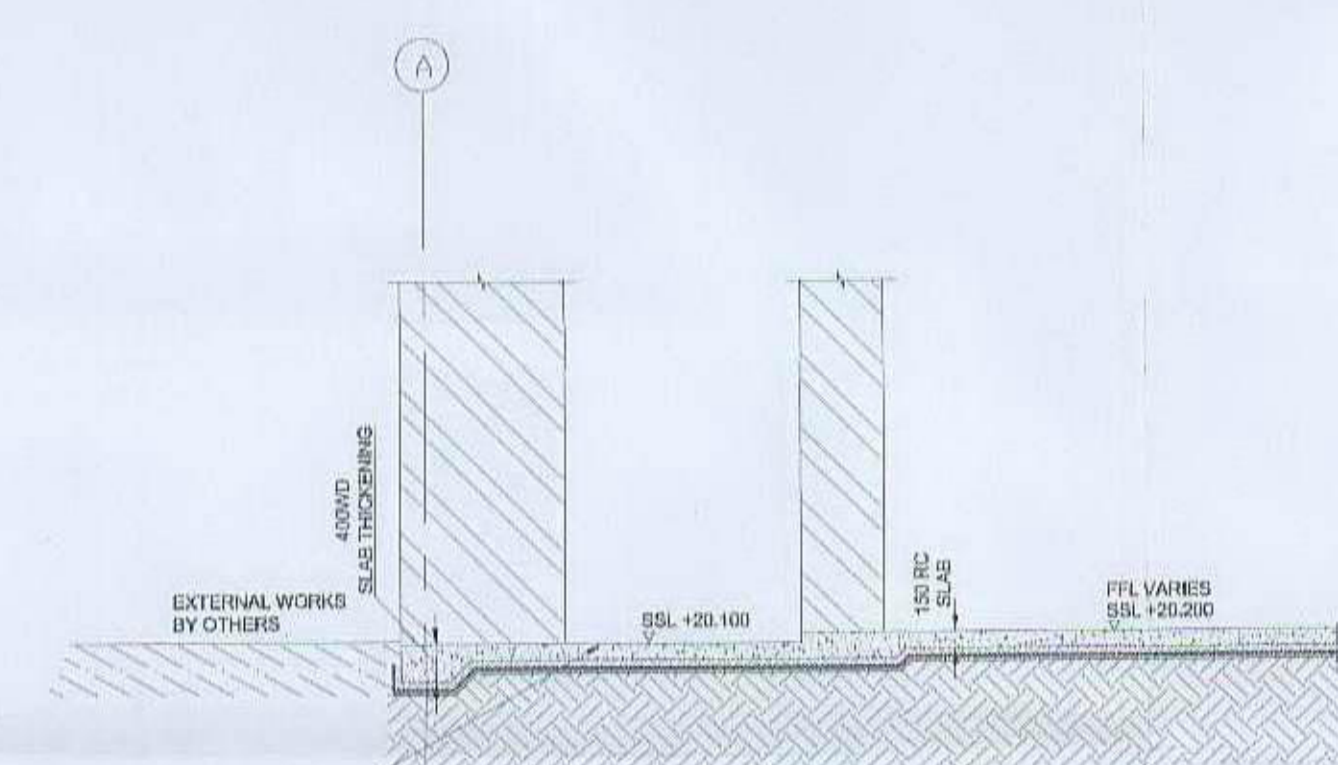
Refer to WEA Drawing No 437-200 and related drawing referenced therein

- This drawing is to be read in conjunction with all relevant Architects and Engineers drawings and the specification.
- The Contractor must advise the Architect and Engineer of any discrepancies between the contract drawings and existing site dimensions.
- Revision notes are for guidance only. For specific details refer to drawing.

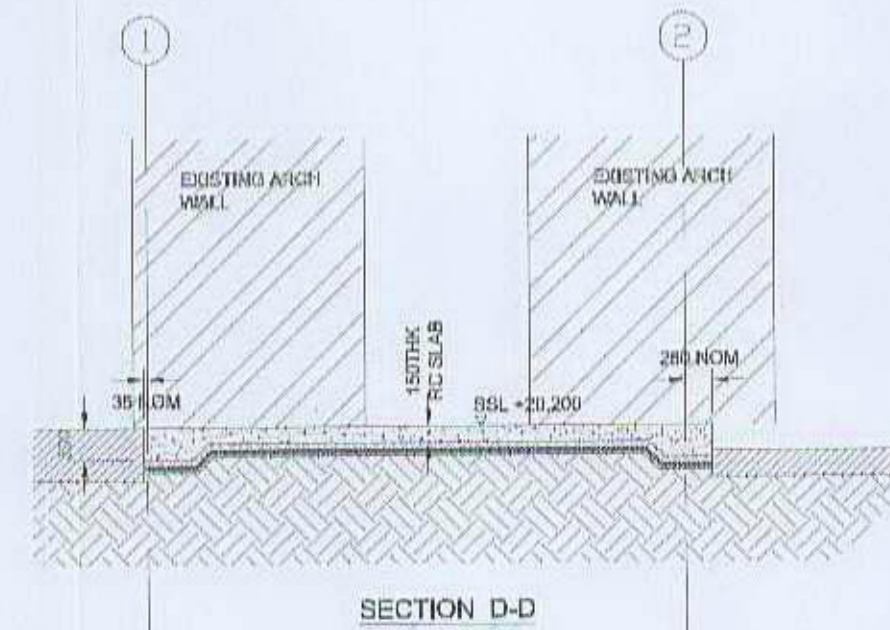
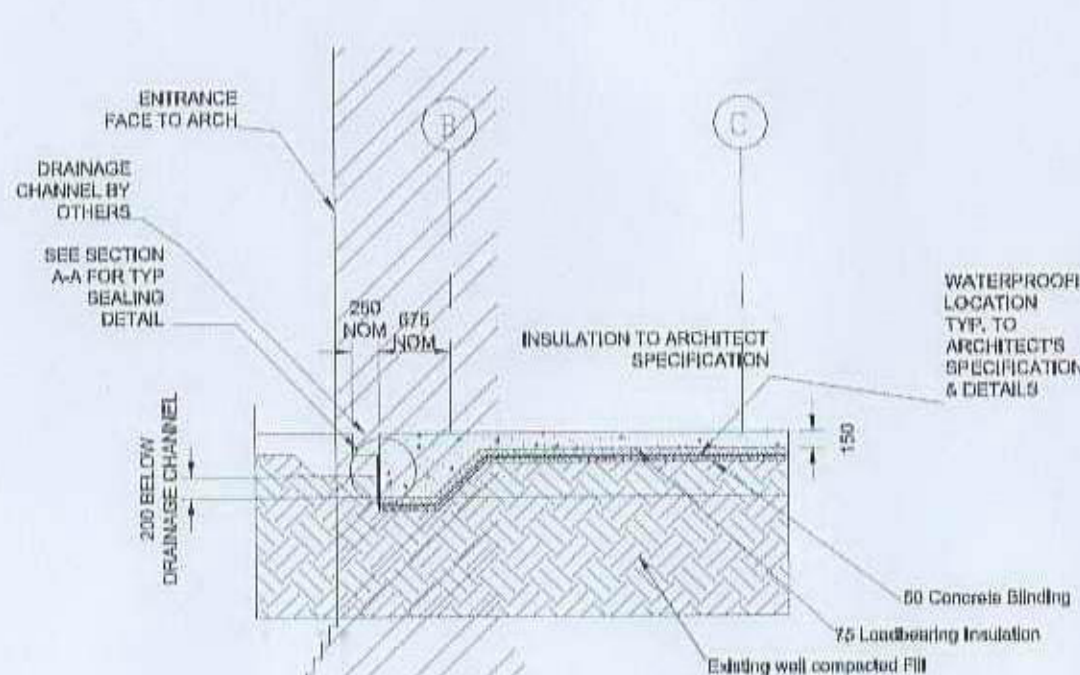


BASED ON TRIAL PIT INFORMATION SHOWN ON DRAWINGS TP1 TO TP5

FOR ALL BUILDERS WORKS OPENINGS REFER TO ARUP M&E DRAWINGS



NOTE:- For Manholes & Gully setting-out refer to Architects & Arups drawings



RECEIVED
17 JUN 2011
LEWIS HOUSE

11/02753.LBA

2	Columns added for dumb water & ramps removed	31.05.10
1	Further coordination clouded	10.11.10
0	1st CONSTRUCTION ISSUE	28.09.10

THE SOUTHGATE LTD PARTNERSHIP
BATH SPA TRAIN STATION

GA OF GROUND FLOOR ARCHES 50 TO 53

FOR INFORMATION
Date: 11/10/10
Scale: 1:100

NOV 2007
3824/S01 2

BEATTIE WATKINSON